

SHORT GRAND DIVE PRO PLUS



Our hyperbaric chambers are a
Class II medical device cleared
by the FDA requiring a
prescription.

TABLE OF CONTENTS

Page 4: What is included	Page 51: Support
Page 5: Building the Frame	Page 52: Accessories
Page 12: Failed Circuit Alarm	Page 53: Chamber Care
Page 15: Inflating the Chamber	Page 58: Warranty
Page 23: Connecting the Cradles	
Page 25: Connecting to the Frame	
Page 27: Deflating the Chamber	
Page 30: Inserting the Carpet	
Page 31: Use for Wheelchair	
Page 32: Use of a Chair	
Page 33: Use of the Foam Mat	
Page 34: Setup Complete	
Page 35: Operation of Chamber	
Page 40: Components	
Page 48: Regulate Ear Pressure	
Page 50: Safety	

WHAT IS INCLUDED



CARRY BAG



CRADLES



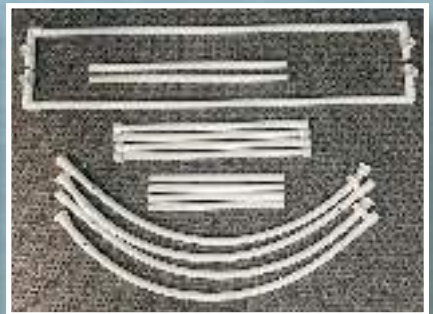
FOAM MAT



CARPET 1



CARPET 2



FRAME

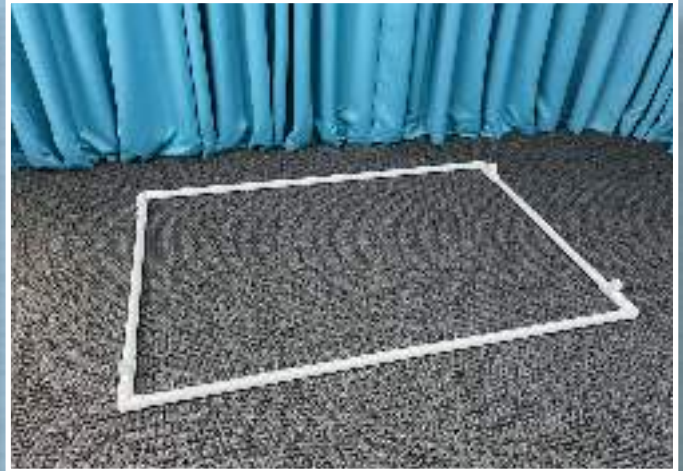
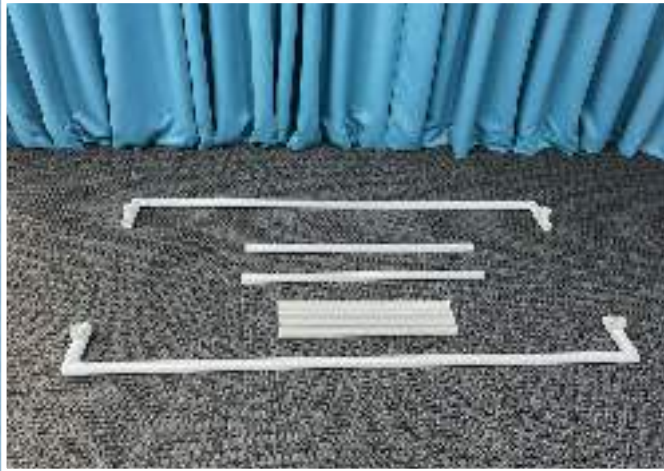


COMPRESSORS



OPEN ME FIRST

BUILDING THE FRAME

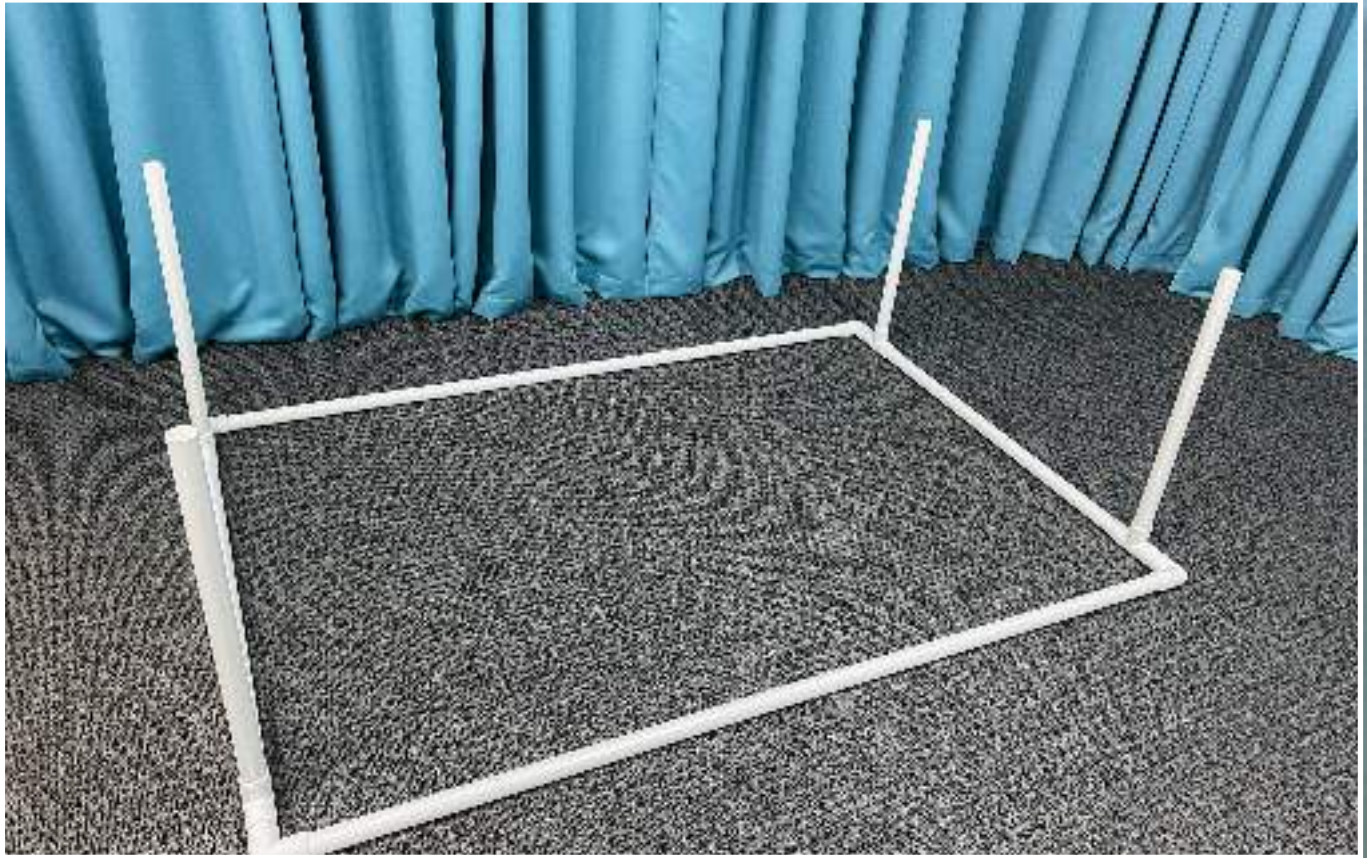


First lay out all the frame pieces on the floor.

Take the 2 base pieces and place them facing each other on the floor.

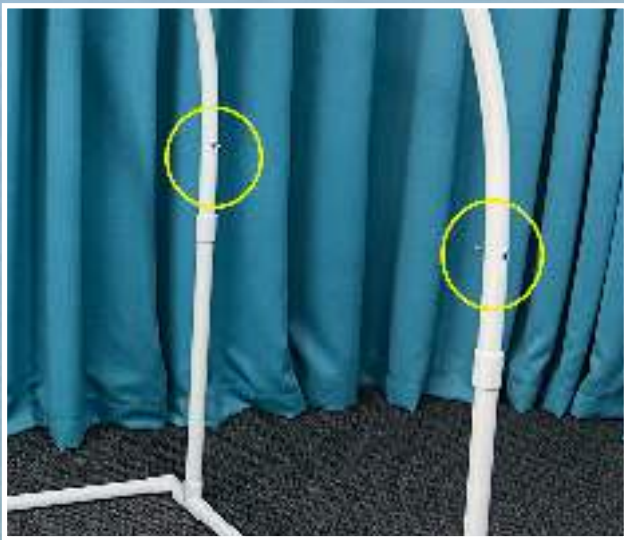
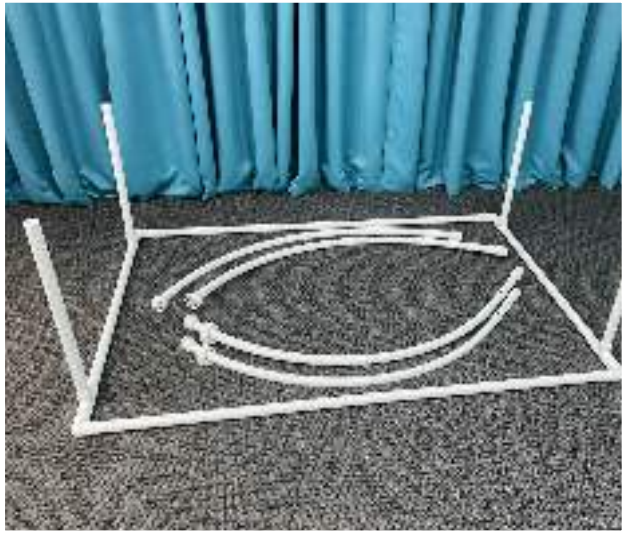
Attach the 2 long poles to each base piece to form a rectangle.

BUILDING THE FRAME



Take the 4 shorter poles and place them in each Tee on the rectangle base.

BUILDING THE FRAME



Notice the arch pieces have screws. Place each arch pair into the short vertical poles connecting them together as you go.

Be sure that the threaded side of the screws are facing inward toward the middle of the frame.

BUILDING THE FRAME

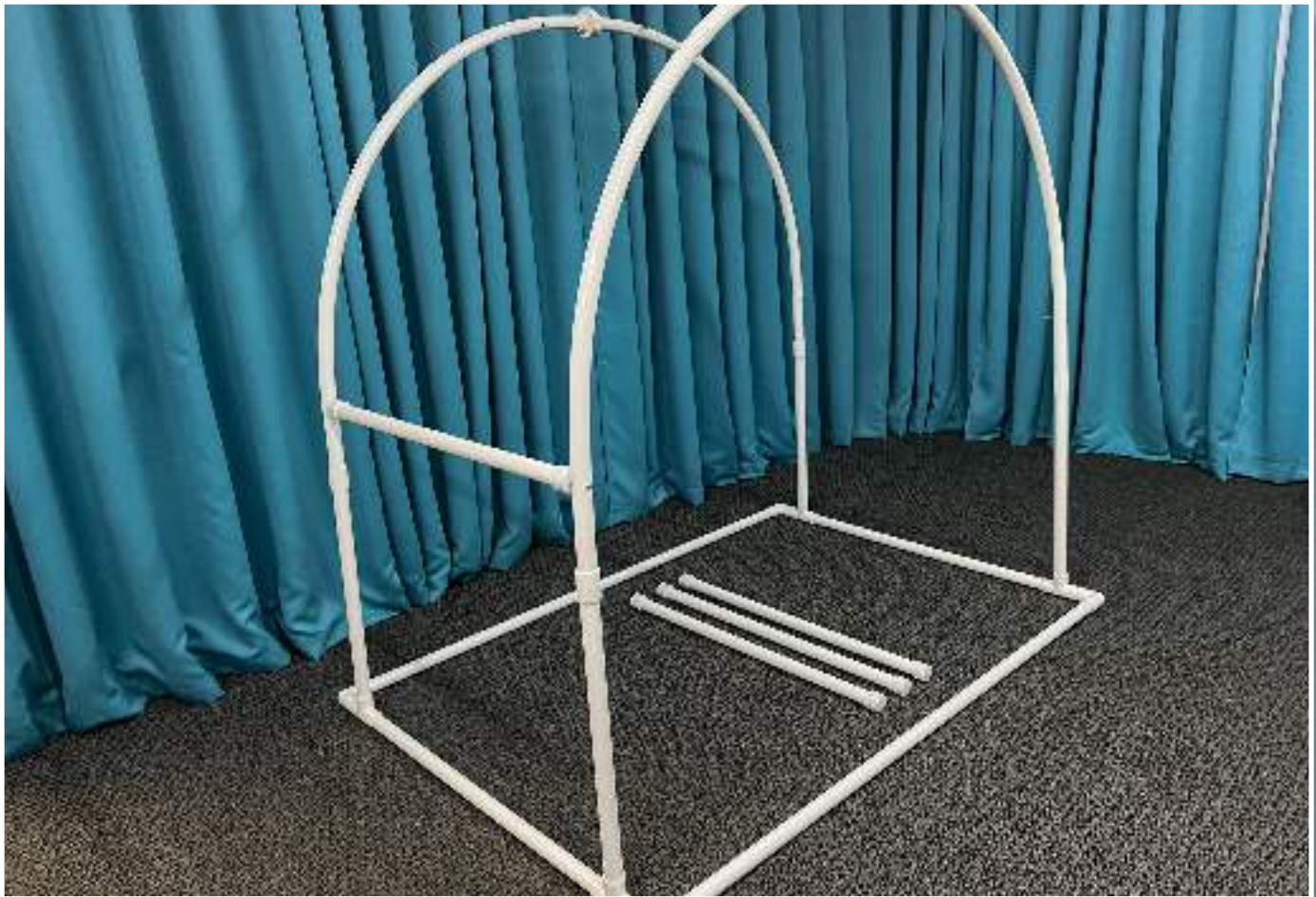


Now you will connect the poles to the arches. First we will start with the side poles.

Take the pole and place the screw end into the hole in the center arch.

Connect the other end of the pole to the screw that is mounted on the end arch using the Phillips screwdriver that was included in your packet.

BUILDING THE FRAME



The two connected side poles look like this.

[Click for video reference](#)

[Contents](#)

BUILDING THE FRAME



Repeat these steps to connect the poles on the top.

[Click for video reference](#)

[Contents](#)

BUILDING THE FRAME



Your frame should look like this.

FAILED CIRCUIT ALARM



Take the circuit alarm, ensure that the 9 volt battery is installed in the circuit alarm. Plug the circuit alarm into the wall socket. Don't use an outlet controlled by a light switch.

FAILED CIRCUIT ALARM



Plug the included power strip into the back of circuit alarm.

FAILED CIRCUIT ALARM



Now plug each compressor into the power strip.

INFLATING THE CHAMBER



Now it is time to remove the chamber from the carry bag.

Place the deflated chamber under the frame with the zipper facing to the front.

INFLATING THE CHAMBER



First we will need to close both the internal and external zippers to inflate the chamber. Close the internal zipper. ***WARNING*** Failure to align the zipper chains can damage the zipper teeth.

Notice the zipper has a dock at each end of the zipper. Align both sides of the zipper to make it easier to close.

Apply a drop of the Tzip lubricant to the rubber dock to ease in closing and sealing the chamber.

INFLATING THE CHAMBER



When the internal zipper pull is placed into the dock an air tight seal is created.

Summit to Sea provides a unique two zipper combination, one internal air tight zipper and one external mechanical zipper.

As you can see the picture on the right the slider is fully closed into the dock.

On the left is an example of a zipper not properly zipped, notice that the slider is not fully closed in the dock.

If the slider is not completely seated into the dock the chamber will not fully pressurize.

INFLATING THE CHAMBER



Now close the external zipper.

When closing the external zipper ensure it is completely closed into the V shaped cutout on the white strap.

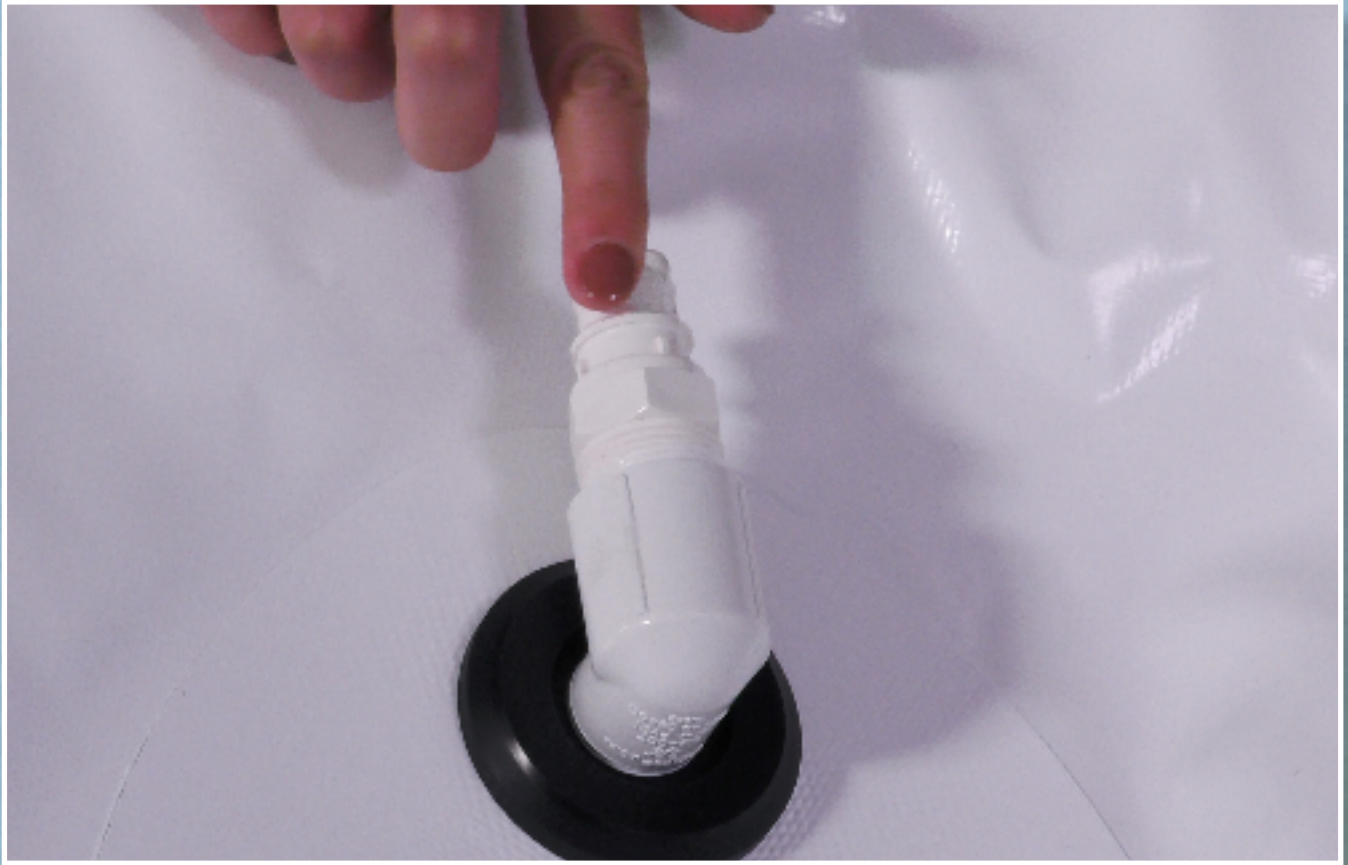
INFLATING THE CHAMBER



Now that you have both zippers completely closed make sure the red deflation valves are in the closed position. There is a red valve at each end of the chamber.

To ensure the red valve is closed line up the silver dots on valve.

INFLATING THE CHAMBER



Connect the compressor hoses to the chamber. These fill valve connectors are located on the back of the chamber.

It is recommended to put a small dot of silicone lubricant on the O ring on the end of each fill valve connector.

INFLATING THE CHAMBER



Click the hoses onto the fill valves.

Then turn on the power to the compressors.

INFLATING THE CHAMBER



When the chamber is inflated it will look like this.

CONNECTING THE CRADLES



Once the chamber is fully inflated, connect the stabilizer cradles to the bottom of the chamber.

CONNECTING THE CRADLES



Have someone help you lift the chamber so you can slide the cradles underneath, then attach the cradles to the Velcro on the bottom of the chamber at both ends.

You will notice one of the cradles has an extended foam pad connected. Place this cradle on the Velcro strips at the front of the chamber with the foam pad facing the opening of the chamber. This is to protect the zippers.

CONNECTING TO THE FRAME



Now connect each Velcro strap to the frame overlapping no more than 1"

DEFLATING THE CHAMBER



Now it is time to deflate the chamber so the carpet can be inserted.

Deflate the chamber by turning one or both of the red deflation valves.

You must wait until the gauge needle reads zero before unzipping the external zipper. The gauge is located on the back on the chamber.

DEFLATING THE CHAMBER



Now that the gauge is at 0 and the chamber is soft. Unzip the external zipper.

DEFLATING THE CHAMBER



Once you unzip the external zipper then you can unzip the internal zipper.

INSERTING THE CARPET



To open the chamber, place the door flap over the top of the chamber.

Now place the rectangle carpet in the chamber. Be sure to roll the carpet out, so the carpet is as flat as possible.

USE FOR WHEELCHAIR



If using a wheelchair, place the small square carpet over the zipper to protect it. Then roll the wheelchair into the chamber. When you are closing the chamber, you will remove the small square carpet.

USE OF A CHAIR



If you would like to use a comfortable chair place it on the carpet inside. You will never want to place any furniture or objects with sharp edges into the chamber that could damage the walls of the chamber.

USE OF THE FOAM MAT



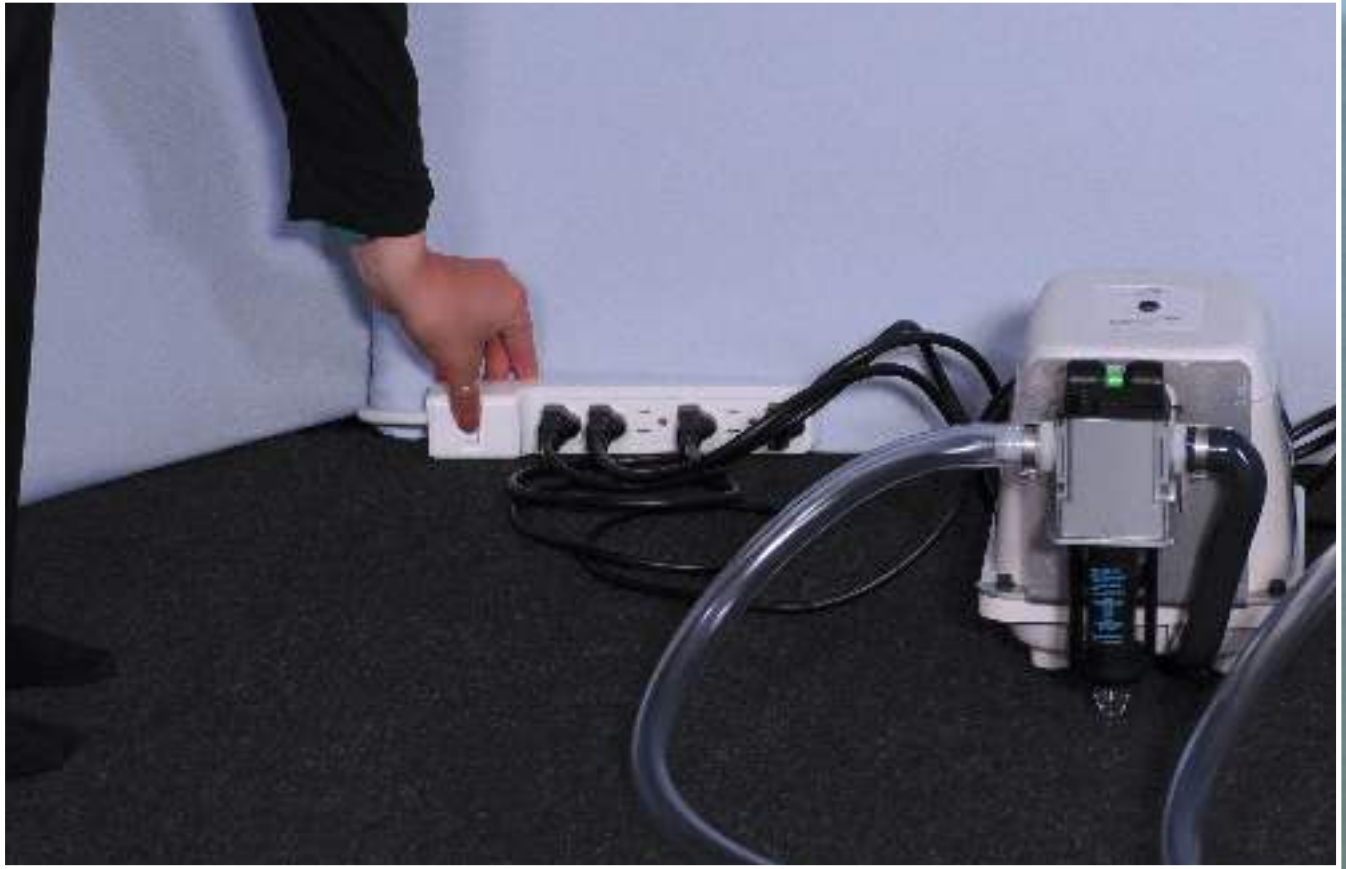
If you are using the foam mat you can lay the mat on top of the rectangle carpet.

SET UP COMPLETE



Congratulations you have successfully set up your Grand Dive Pro Plus chamber.

OPERATION OF CHAMBER



First turn on the power to the compressors.

OPERATION OF CHAMBER



Next, the person will enter the chamber.

From the outside you will close the internal zipper while aligning the sides of the zipper.

WARNING Failure to align the zipper chains can damage the zipper teeth.

OPERATION OF CHAMBER



Then close the external zipper making sure the zipper pull is pulled to the end dock.

WARNING Failure to align the zipper chains can damage the zipper teeth.

OPERATION OF CHAMBER



Make sure the red deflation valve is closed. Your chamber will now automatically pressurize to the factory set pressure of 1.3 ATA or 4.4 PSI. You will know your chamber is fully pressurized when you hear the air releasing from the pressure relief valves and your gauge reads in the blue.

OPERATION OF CHAMBER



When it is time to end your treatment, turn the red deflation valve to deflate the chamber. Once the chamber sides are soft and the gauge reads zero unzip both zippers. Now the person can exit the chamber.

COMPONENTS



It is important to understand the functions of the individual components of your chamber. On the following pages we will explain what the individual components on your chamber do.

COMPONENTS



There are four pressure relief valves with blue circles. During treatment air will be released from these 4 valves. They are designed and factory calibrated to equalize the pressure at 1.3 ATA. or 4.4 PSI. There are two located at each end of the chamber.

COMPONENTS



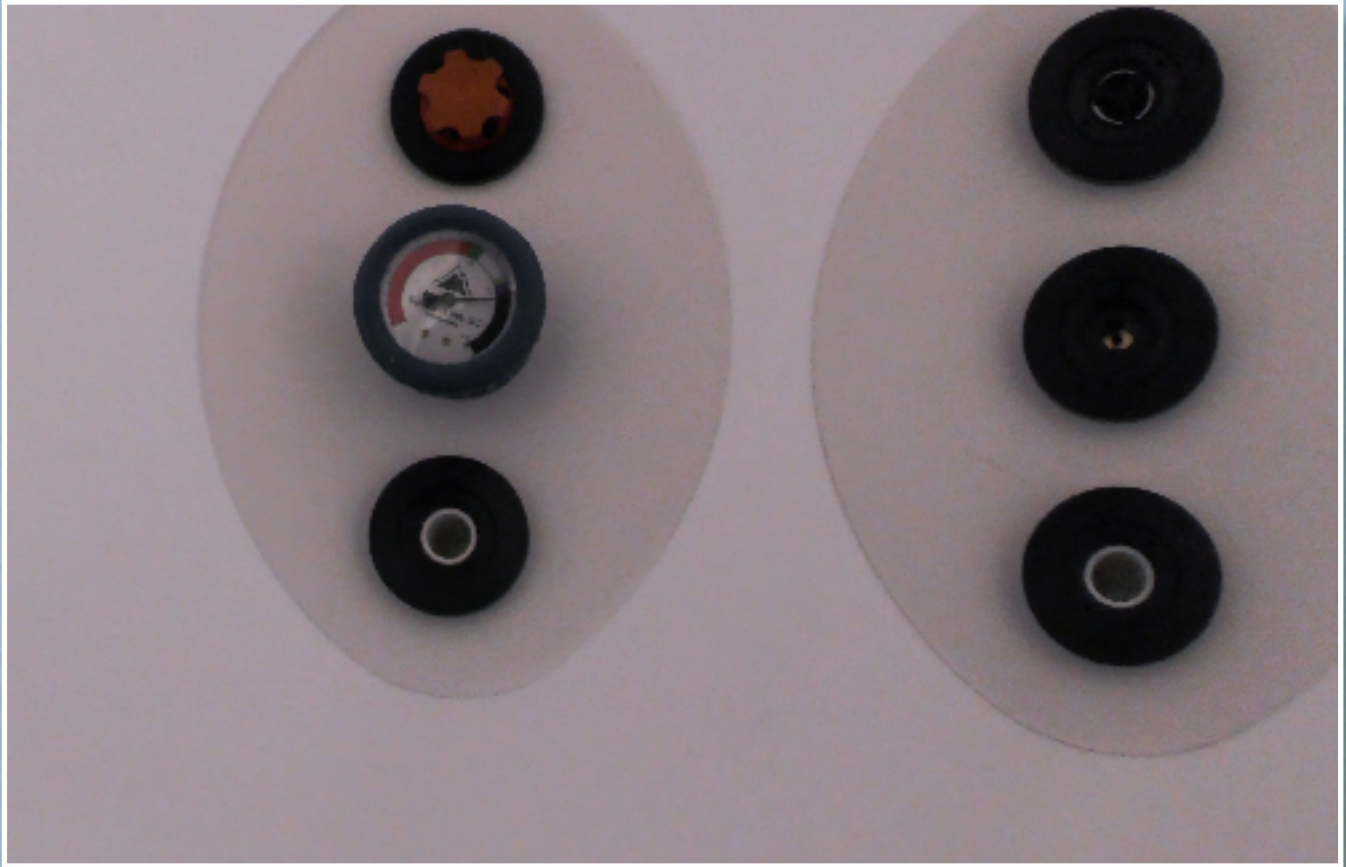
There is a safety backup pressure relief valve with a yellow circle, it opens at a slightly higher pressure than the blue valves.

COMPONENTS



Next you will see the color-coded gauge. The needle will start at the bottom of the black area at zero. Once the chamber is fully pressurized air will be released out of the blue pressure relief valves and the needle will appear in the blue area. If the needle is anywhere within the blue area you are at full pressure. These gauges are accurate to plus or minus 5%. If the needle appears past the yellow area call your distributor.

COMPONENTS



There is also an internal gauge which operates similar to the exterior gauge. The only difference is the external gauge needle moves clockwise and the internal gauge needles moves counter clockwise.

COMPONENTS



On the back of the chamber are four fill valves. This is where the compressors connect to the chamber.

COMPONENTS



Above the fill valves is an auxiliary port where the auxiliary valve attaches. There is one on the back and one on the front of the chamber.

These small auxiliary valves are located in your packet.

COMPONENTS



The red deflation valves (inside or out) are used to deflate the chamber at the end of your treatment. They are designed to turn in either direction to release air from the chamber. As you turn the red deflation valve you will notice that you have control of the speed of deflation. These valves can also be used to customize the speed of pressurization for greater comfort and to aid in the equalization of ear pressure. The person inside the chamber should never experience ear pain.

REGULATE EAR PRESSURE



As the chamber begins to inflate, you may notice added pressure on the ears. This feeling indicates the need to equalize the pressure. This feeling is similar to that of landing in an airplane. There are several ways to relieve this pressure.

First, pinch your nose, close your mouth and try gently blowing out your nose. Repeat every time you begin to feel this pressure. This technique is called the Valsalva maneuver.

Drinking water during inflation can help the pressure on your ears as well.

Yawning or opening your mouth wide will also help.

Lastly, chewing gum may help relieve this pressure.

REGULATE EAR PRESSURE



If the previous suggestions do not resolve the ear pressure, open the red deflation valve until the feeling of pressure is gone. Then close the red valve to continue to pressurize the chamber.

SAFETY

REMEMBER

Make sure both the inside and the outside zippers are completely closed every time the chamber is in use. Failure to do this may result in inability to pressurize or damage the chamber.

If the relief valves do not release air when it is at full pressure, stop your treatment and call your distributor.

It is important that the relief valves are clear of all obstructions inside and out during your treatment.

The compressors must remain on for the entire treatment. This ensures the circulation and exchange of fresh air to provide a safe and comfortable treatment.

Do not open the zippers until the gauge reads zero.



SUPPORT

Click [here](#) for an instruction video of the Grand Dive Pro Plus chamber.

If you have any questions regarding your chamber please contact your distributor first.

If you have additional questions please visit our website at www.summit-to-sea.com/support and fill out the form.

If you need immediate assistance, you can call (1-877-774-3483) and choose option 3.



ACCESSORIES

Click [here](#) to go to our accessory page. There you can order a variety of accessories for your chamber including: (Link also at the bottom of our homepage.)

Maintenance programs

Zipper lubricant

Zipper cleaner

Compressor filters

Additional frames

Additional mats

Magnetic utility hooks

Auxiliary valve

Gauges

Red deflation valve muffler

Extended warranties

Cleaning supplies



CHAMBER CARE

It is recommended that the compressor filters are changed approximately every 6 months.

To learn how to change these filters go to

www.summit-to-sea.com/filters

To order these replacement filters go to

www.summit-to-sea.com/accessories



CHAMBER CARE



White Compressor Filter

To see a video on how to change the filters go to www.summit-to-sea.com/filters

There is a filter under the top plate of the compressor. It is recommended that you replace the filter every 6 months.

CHAMBER CARE

The .003 Micron Filter



Lay the compressor on its side



Push the black bulb up and give it a quarter turn to unlatch then pull down



Unscrew the silver filter element. Screw on the new silver filter



Put the black bulb back on pushing up and giving it a quarter turn to make sure it is securely connected.

To see a video on how to change the filters go to www.summit-to-sea.com/filters

It is recommended that you replace the filter every 6 months.

CHAMBER CARE

ZIPPERS

The outside zipper requires very little maintenance.

A bottle of zipper cleaner lubricant has been included in your packet to use on a weekly basis or as needed.

Apply the Tzip zipper lubricant weekly or as needed to the docks and first 3 teeth.

Periodically, wipe the outside open zipper with a damp cloth.

CLEANING THE CHAMBER

There is no maintenance needed other than cleaning with a non-petroleum based household cleaner.

An anti-bacterial cloth has been included with your chamber. To order these cloths go to

www.summit-to-sea.com/accessories

FITTINGS & HOSES

Regularly check the fittings and hoses for cracks or damage.

If you see any damage, call your distributor for a replacement part.

CHAMBER CARE

STORAGE

Prior to storing the chamber, ensure that it has been cleaned inside and out by using a non-petroleum based household cleaner.

Carefully fold the chamber ensuring all gauges and fittings are protected with bubble wrap or a similar material. ([How to fold](#))

Place the chamber in the carry case and store in a dry area between 40 and 80 degrees.

Upon first reuse, run the chamber for several hours to purge the chamber from any odors that may have collected during storage.

WARRANTY

Summit to Sea warrants our chambers against defect for two years from delivery date.

The warranty covers parts and labor to repair the Summit to Sea system.

Summit to Sea, at our option and sole discretion, will repair or replace the warranty item.

The warranty does not cover damage as a result of misuse or modification.

Shipping to and from Summit to Sea is the customer's responsibility.

Summit to Sea has always and will continue to cover all components on our chambers — including zipper, windows, seams, valves, hoses... in other words, if it came from Summit to Sea we will stand behind our product.